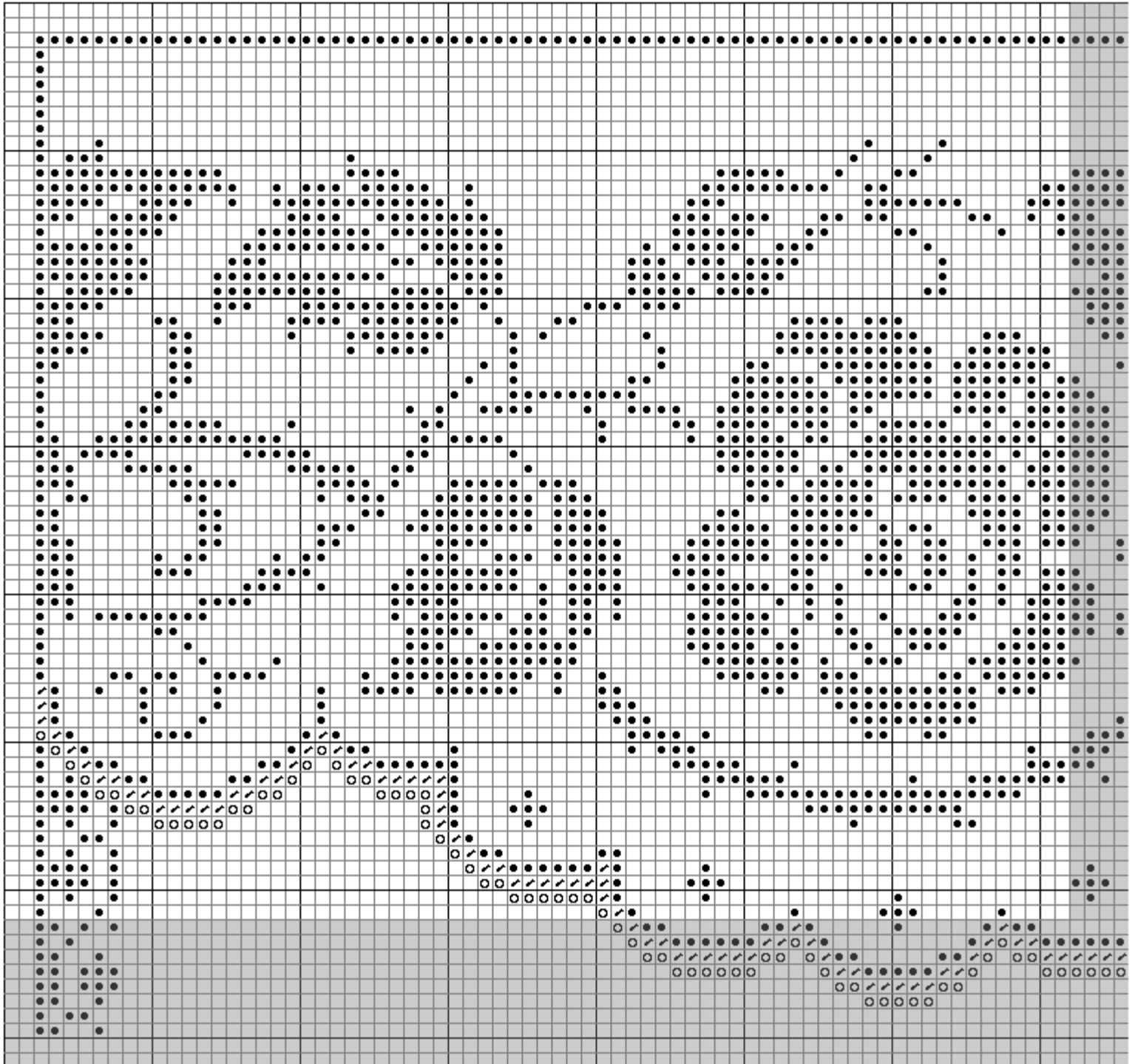



EMS Project 2008 " Rose Sampler"


Part 1


Copyright © 2008 Ellen Maurer-Stroh. All rights reserved.

Top left part of the design.



 DMC 312 Navy blue lt
(or any main color of your choice)

 DMC 318
steel gray lt

 DMC 415
pearl gray

Finished sampler stitched on 16ct. Aida/32ct. Evenweave = 13.25 x 19.25" or 34 x 49 cm

Finished sampler stitched on 14ct. Aida/32ct. Evenweave = 15.25 x 22" or 39 x 56 cm

To prepare your fabric please add a margin of about 3" (7,5 cm) on all sides to the size of the finished design.
Start stitching in the top left corner.