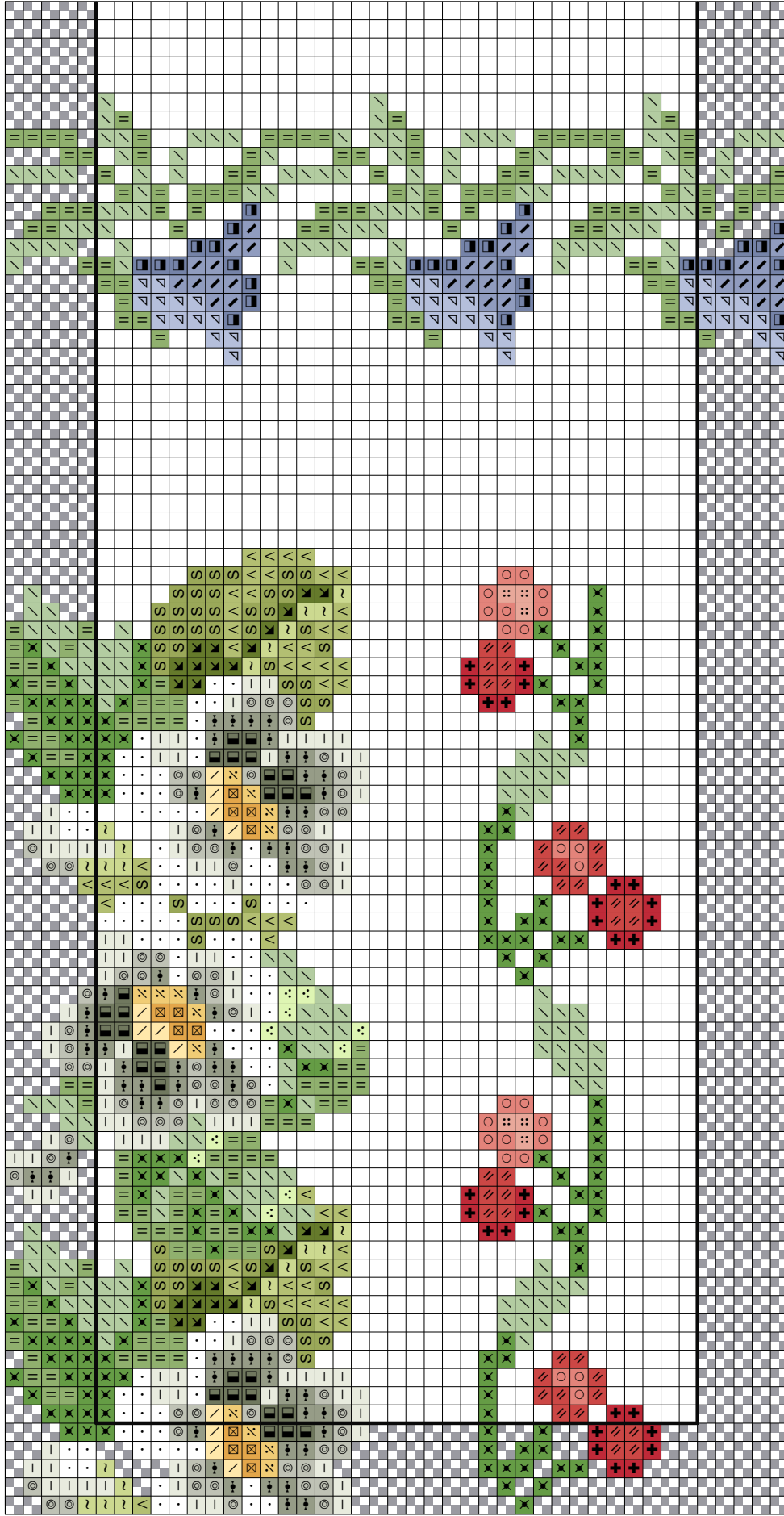


Use 3 strands of thread for cross stitch on 14/28ct. Use 2 strands of thread for cross stitch on 16/32ct.

Sym	No.	Color Name	Sym	No.	Color Name	Sym	No.	Color Name
▲	156	Blue Violet md lt	●	350	Coral md	⋮	352	Coral - lt
S	469	Avocado green	~	471	Avocado Green v lt	+	498	Red dk
*	518	Wedgewood lt	●	606	Orange - Red bright	■	646	Beaver grey - dk
+	647	Beaver grey - med	⦿	676	Old Gold lt	↘	677	Old gold - vy lt
⊗	729	Old gold - med	▲	793	Cornflower Blue md	■	817	Coral red v dk
■	936	Avocado green - dk	■	987	Forest Green dk	↗	988	Forest Green md
■	3051	Green Gray dk	—	3072	Beaver grey - vy lt	■	3345	Hunter Green dk
■	3348	Yellow Green lt	■	3807	Cornflower Blue	.	5200	B Bright white
■								

The gray shaded blocks on the chart represent the overlapping stitches. Don't stitch twice!



Use 3 strands of thread for cross stitch on 14/28ct. Use 2 strands of thread for cross stitch on 16/32ct.

Sym	No.	Color Name	Sym	No.	Color Name	Sym	No.	Color Name
	156	Blue Violet md lt		350	Coral md		352	Coral - lt
	469	Avocado green		471	Avocado Green v lt		498	Red dk
	518	Wedgewood lt		606	Orange - Red bright		646	Beaver grey - dk
	647	Beaver grey - med		676	Old Gold lt		677	Old gold - vy lt
	729	Old gold - med		793	Cornflower Blue md		817	Coral red v dk
	936	Avocado green - dk		987	Forest Green dk		988	Forest Green md
	3051	Green Gray dk		3072	Beaver grey - vy lt		3345	Hunter Green dk
	3348	Yellow Green lt		3807	Cornflower Blue		5200	B Bright white

The gray shaded blocks on the chart represent the overlapping stitches. Don't stitch twice!