

EMS Project 2009 "Advent #23"



Fabric: 14/28 count Colors: DMC Stitches: 51 x 45 Size: 3.6 x 3.2 inches or 9,25 x 8,20 cm
 Use 3 strands of thread for cross stitch on 14/28ct. Use 2 strands of thread for cross stitch on 16/32ct.

Sym	No.	Color Name	Sym	No.	Color Name	Sym	No.	Color Name
■	336	Navy blue	●	498	Xmas red - dk	L	666	Xmas red - bright
○	677	Old gold - vy lt	■	700	Xmas green - bright	S	702	Kelly green
⌘	703	Chartreuse	■	803	Baby blue - ul vy dk	+	829	Golden olive - vy dk
■	972	Canary - deep	○	3078	Lemon - vy lt		3820	Straw - dk
×	3822	Straw - lt	■	3829	Old gold - vy dk	-		Blanc White

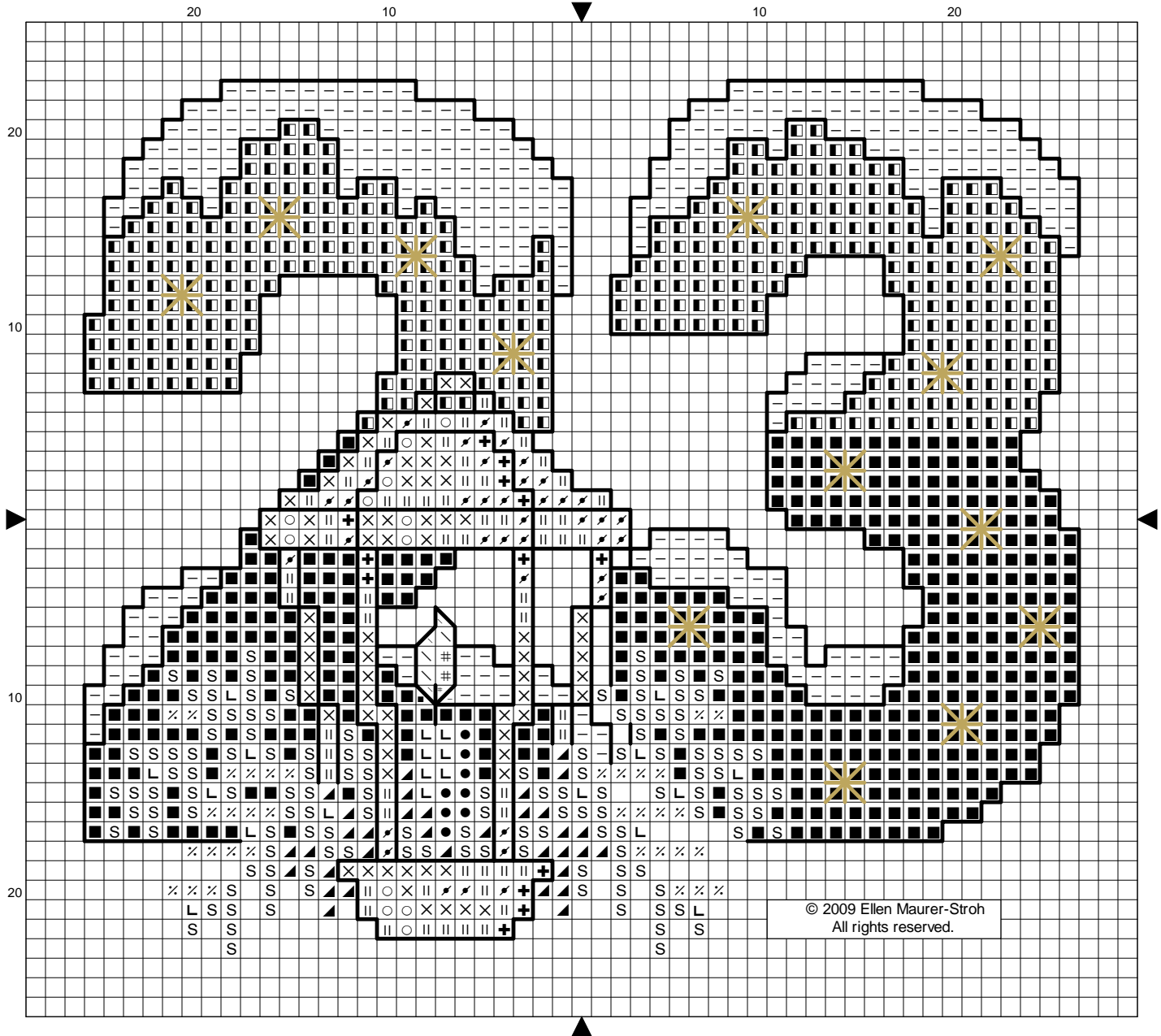
Use 1 strand of thread for black backstitch. Use 2 strands of metallic gold for the star stitches.

—	310	Black	-	for all backstitches
—	5284	Metalic Gold	-	for star-stitches

© 2009 Ellen Maurer-Stroh. All rights reserved.

This complimentary chart is designed by me, Ellen Maurer-Stroh. Although given for 'free', please note that the design is copyright protected. Feel free to download one copy of the design for yourself. The chart may not be kitted or sold. It's not allowed to use this design to put on your own webpage. Distributing the chart via e-mail or posting the pattern on a forum or message board is against the copyright law. Please respect my copyright. Thanks and enjoy stitching!

EMS Project 2009 "Advent #23"



Fabric: 14/28 count Colors: DMC Stitches: 51 x 45 Size: 3.6 x 3.2 inches or 9,25
 Use **3** strands of thread for cross stitch on 14/28ct. Use **2** strands of thread for cross stitch on 16/32ct.

Sym	No.	Color Name	Sym	No.	Color Name	Sym	No.	Color Name
■	336	Navy blue	●	498	Xmas red - dk	L	666	Xmas red - bright
○	677	Old gold - vy lt	▲	700	Xmas green - bright	S	702	Kelly green
⋈	703	Chartreuse	■	803	Baby blue - ul vy dk	+	829	Golden olive - vy dk
#	972	Canary - deep	\	3078	Lemon - vy lt		3820	Straw - dk
X	3822	Straw - lt	↗	3829	Old gold - vy dk	-		Blanc White

Use 1 strand of thread for black backstitch. Use 2 strands of metallic gold for the star stitches.

—	310	Black	-	for all backstitches
—	5284	Metallic Gold	-	for star-stitches

© 2009 Ellen Maurer-Stroh. All rights reserved.

This complimentary chart is designed by me, Ellen Maurer-Stroh. Although given for 'free', please note that the design is copyright protected. Feel free to download one copy of the design for yourself. The chart may not be kitted or sold. It's not allowed to use this design to put on your own webpage. Distributing the chart via e on a forum or message board is against the copyright law. Please respect my copyright. Thanks and enjoy stitching!